



THE BENYON ESTATE

De Beauvoir Road N1 4EL

£3250 per month



We are pleased to offer a beautiful garden maisonette, which has been recently refurbished in the heart of De Beauvoir Town. Features modern fixtures and fittings throughout, with a spacious open-plan kitchen and reception. This property offers two double sized bedrooms offering a bright modern bathroom, not to mention the extra storage space with a separate utility room. The private garden has been landscaped to a lovely finish with a fully maintained front garden. *The rent is collected by Direct Debit*

The property is located on De Beauvoir Rd which is set within easy reach of the superb range of elite shops, bars and restaurants of Upper Street, Shoreditch and the city while providing motorists with quick and easy access to the A1 road links out of London and to the North. The nearest underground station is Highbury & Islington and Angel (Victoria Line and National Rail). plus Haggerston and Dalston Junction overground trains are very close by on the Kingsland Rd.

- 2 x Double bedrooms
- 1 x Bathroom
- Open plan kitchen
- Open plan double reception
- Private Garden
- Fully maintained front garden
- Available now

Interested?

If you are interested in viewing this property or would like to register, please contact our team on **020 7249 3690**. Alternatively, email info@thebenyonestate.com.



THE BENYON ESTATE

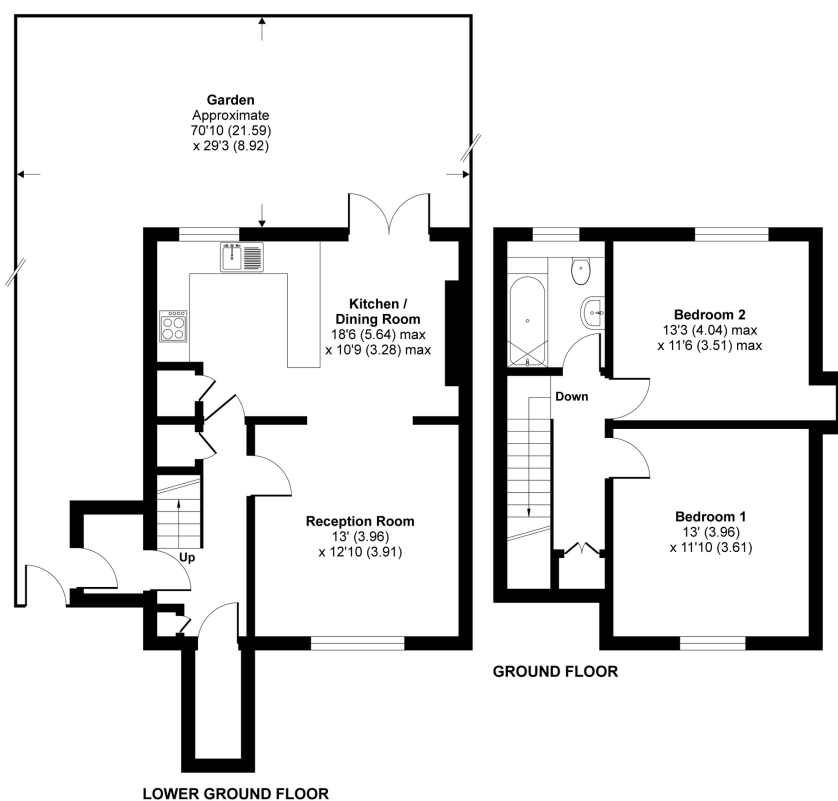
De Beauvoir Road N1 4EL

£3250 per month

De Beauvoir Road, London, N1

Approximate Area = 925 sq ft / 85.9 sq m

*For identification only - Not to scale



Certified
Property
Measurer

Floor plan produced in accordance with RICS Property Measurement Standards incorporating International Property Measurement Standards (IPMS2 Residential). © nichecom 2021. Produced for The Benyon Estate. REF: 772569

Interested?

If you are interested in viewing this property or would like to register, please contact our team on **020 7249 3690**. Alternatively, email info@thebenyonestate.com.